

## SERIAL NUMBERS:

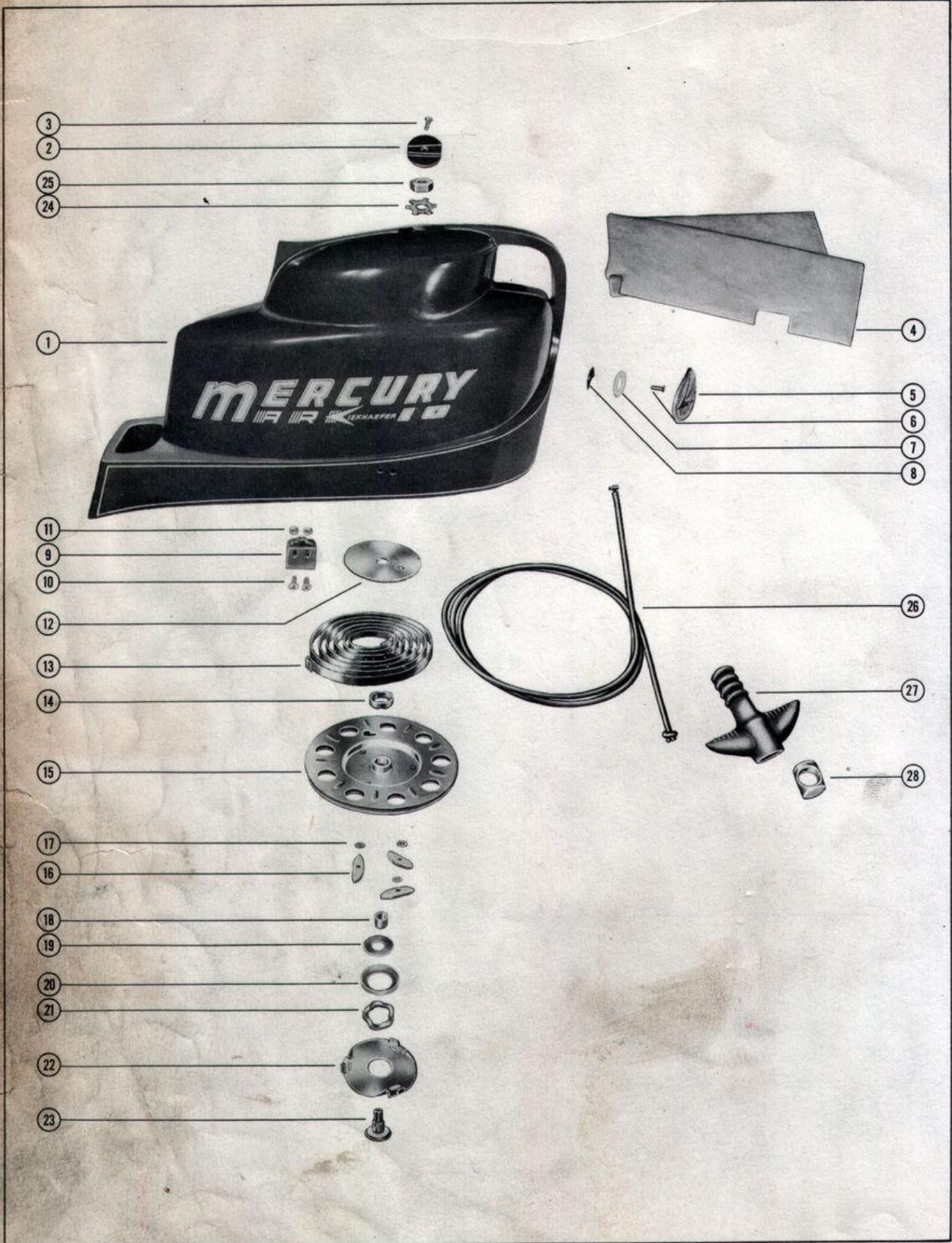
Mark 10 . . . . . 1057994 and up

## INDEX:

	<u>Page</u>
Carburetor Assembly . . . . .	3
Carburetor Linkage . . . . .	4
Clamp and Swivel Bracket Assembly . . . . .	8
Crankshaft and Center Main Bearing Assembly . . . . .	7
Cylinder Block and Crankcase Assembly . . . . .	6
Drive Shaft Housing Assembly . . . . .	9
Fuel Pump and Fuel Line Assembly . . . . .	4
Fuel Tank Assembly . . . . . (See Accessory Section "D")	
Gear Housing Assembly . . . . .	11
Magneto Assembly . . . . .	2
Piston and Connecting Rod Assembly . . . . .	7
Steering Handle Assembly . . . . .	5
Throttle Control Assembly . . . . .	5
Top Cowl and Starter Assembly . . . . .	1
Trunnion Carrier Assembly . . . . .	10

Mark 10 Parts List, Complete . . . . .	90-27706
Gasket Set (Motor Overhaul) . . . . .	27-27096
Decal Set . . . . .	37-27095
Decal Solution (Pint Bottle) . . . . .	92-25143
Adhesive Compound (3 1/2 oz. Kit). . . . .	92-27109
Glue (Blanket Adhesive) . . . . .	92-25234
Shipping Carton (Motor) . . . . .	29305
Shipping Carton (Fuel Tank). . . . .	25463
Gasket and Packing Set (Carburetor) . . . . .	1399-1145
Repair Parts Kit (Carburetor). . . . .	1399-1487

# TOP COWL AND STARTER ASSEMBLY



TOP COWL AND STARTER ASSEMBLY

PART NO.	REF. NO.	DESCRIPTION	MK10
168-1232	1	Cowl, top <i>(does not include decal set)</i>	1
37-27095	-	Decal Set, top cowl	1
26800	2	Cover, trim - top cowl	1
10-26846	3	Screw, trim cover to top cowl	1
27134	4	Blanket, sound absorbing - top cowl	1
26183A1	5	Emblem, top cowl	1
26183A2	5	Emblem, top cowl } <i>see note below</i>	1
17-27034	6	Rivet, top cowl emblem	1
12-27149	7	Washer, nylon - blanket to emblem rivet	1
53-25539	8	Fastener, emblem rivet	1
26821	9	Bracket, top cowl mounting	2
10-22028	10	Screw, mounting bracket to top cowl	4
11-24656	11	Nut, mounting bracket screw	4
20155	12	Retainer, starter spring	1
24-23714	13	Spring, starter rewind	1
23-20159	14	Bushing, spring guide	1
50-28895	15	Sheave Assembly, starter	1
20162	16	Pawl, starter	3
13-29402	17	Washer, wave - starter pawl	3
23-20158	18	Spacer, sheave shaft	1
12-26180	19	Washer, wave washer retainer	1
26179	20	Retainer, wave washer	1
13-20160	21	Washer, wave	1
20164	22	Plate, retainer - starter pawl	1
20157	23	Shaft, sheave	1
14-20165	24	Tab Washer, sheave shaft nut	1
11-20166	25	Nut, sheave shaft (left hand thread)	1
50-22791A1	26	Starter Cable Assembly	1
20662	27	Handle, starter cable	1
20172	28	End Cap, starter cable handle	1
92-25234	--	Glue, adhesive - blanket fastening	1
92-27109	--	Adhesive Compound (3 1/2 ounce kit) emblem fastening	1

NOTE: Emblems for replacement may be ordered in two (2) different color combinations as listed below. Be sure and specify color combination required by adding A1 or A2 suffix to emblem part number 26183\_.

26183A1      Emblem (black background with red and aluminum lettering)

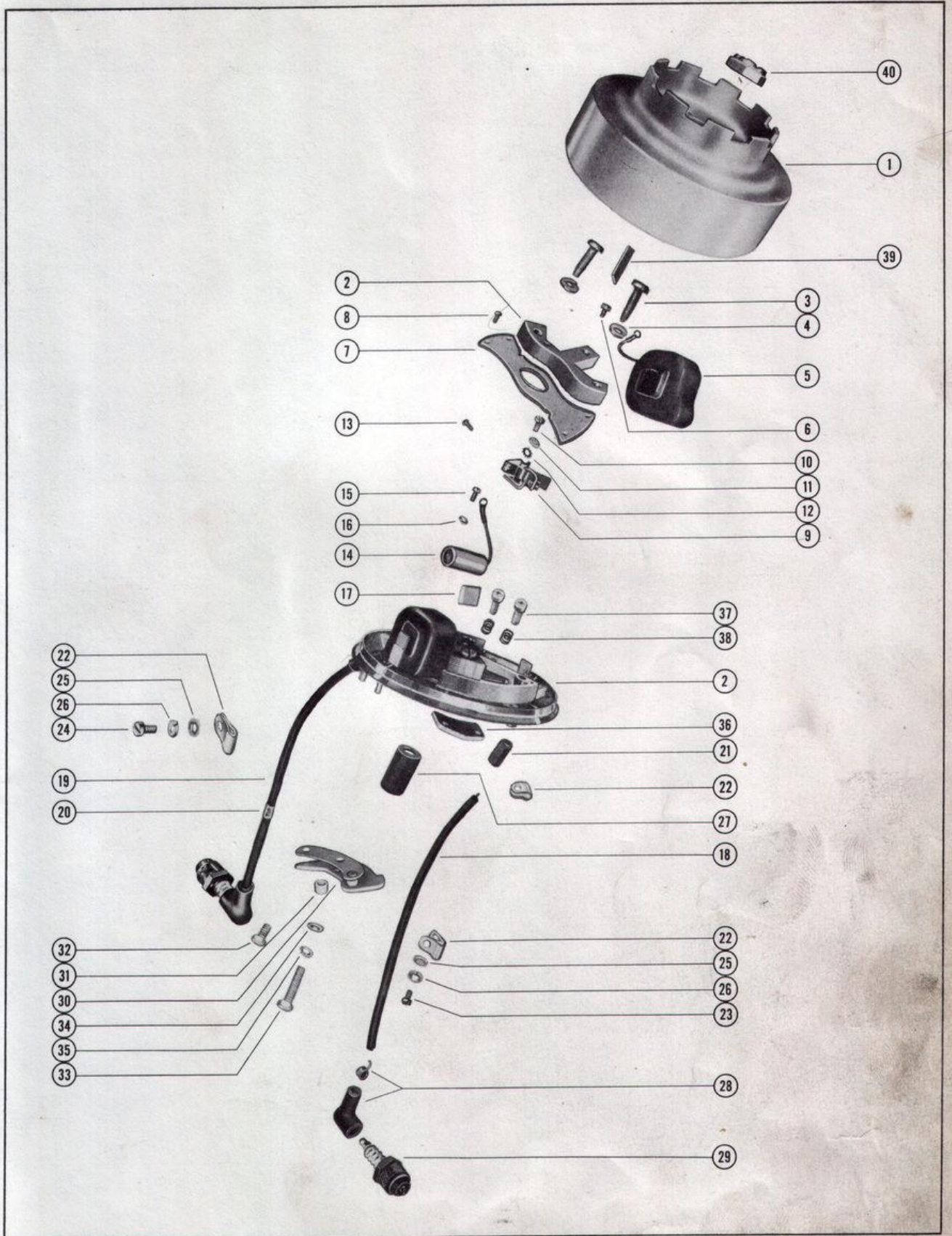
26183A2      Emblem (aluminum background with red and gold lettering)

92-27109      Adhesive Compound (3½ ounce kit) emblem fastening

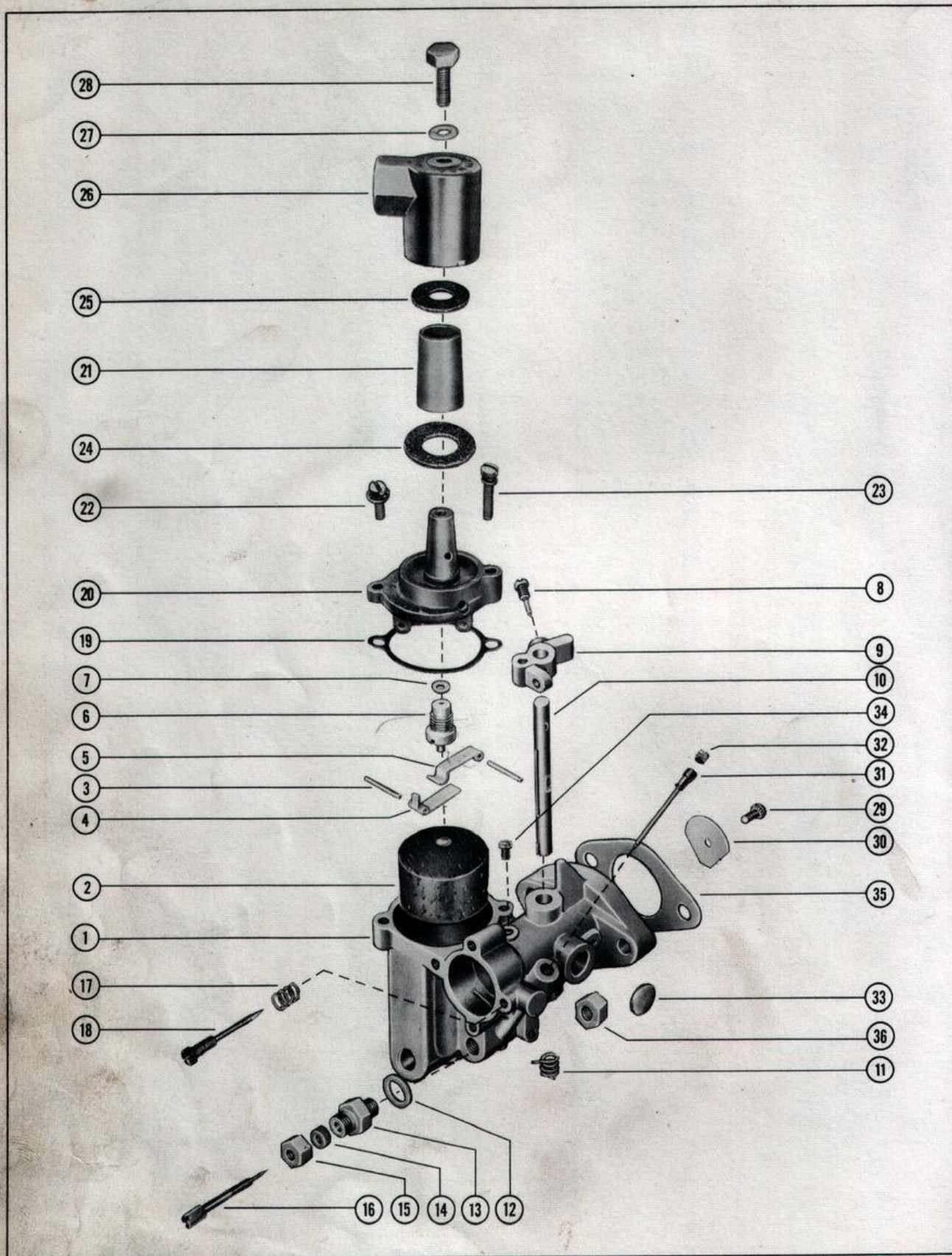
MAGNETO ASSEMBLY

PART NO.	REF. NO.	DESCRIPTION	MK10
328-1228	-	Magneto Assembly, Complete	1
328-1336A1	1	Flywheel	1
398-1338A1	-	Stator Assembly, Complete	1
398-1338	2	Stator and Core	2
398-963	3	Screw, core fastening	4
13-21144	4	Lockwasher, core fastening screw	4
398-173	5	Coil, ignition	2
10-21130	6	Screw, ground terminal	2
398-190	7	Cover, breaker compartment sealing	1
10-21143	8	Screw, sealing cover fastening	4
398-174	9	Breaker Assembly	2
10-21133	10	Screw, breaker fastening	2
12-21135	11	Washer, breaker fastening screw	2
13-21134	12	Lockwasher, breaker fastening screw	2
10-23976	13	Screw, breaker connection	2
398-693	14	Condenser	2
10-21136	15	Screw, condenser fastening	2
13-21134	16	Lockwasher, condenser fastening screw	2
398-192	17	Wick, felt	1
398-193	--	Plug, felt	1
398-965	18	Lead Wire (short)	1
398-981	19	Lead Wire (long)	1
20623	20	Marker, "top" - lead wire	1
32-21137	21	Tube, lead wire (port side)	1
23-25217	--	Bushing, lead wire (starboard side)	1
398-182	22	Clamp, plastic - lead wire to stator	3
10-21138	23	Screw, lead wire clamp (short)	1
10-21139	24	Screw, lead wire clamp (long)	1
12-21135	25	Washer, lead wire clamp screw	2
13-21134	26	Lockwasher, lead wire clamp screw	2
23-20622	27	Bushing, lead wires (upper)	1
398-1098	--	Bushing, lead wires (lower)	1
20119	28	Protector, spark plug	2
33-22805	29	Spark Plug	2
26566A2	30	Throttle Control Cam Assembly	1
23-26560	31	Spacer, throttle cam	1
10-20616	32	Screw, throttle cam to stator plate (short)	1
10-21602	33	Screw, throttle cam to stator plate (long)	1
12-28001	34	Washer, cam mounting screw (long)	1
26565	36	Clip, magneto hold down	2
10-20646	37	Screw, hold down clip to magneto	4
24-27087	38	Spring, hold down clip screw	4
28-20907	39	Key, flywheel	1
11-22339	40	Nut, flywheel	1

# MAGNETO ASSEMBLY



# CARBURETOR ASSEMBLY



CARBURETOR ASSEMBLY

PART NO.	REF. NO.	DESCRIPTION	MK10
1329-1262	1	Carburetor Assembly, Complete (AJ-52A)	1
1399-110A1	2	Float Assembly	1
17-20853	3	Pin, float lever pinion	2
1399-102	4	Lever, float (lower)	1
1399-101	5	Lever, float (upper)	1
1399-1138	6	Inlet Needle, Seat & Gasket	1
27-25033	7	Gasket, inlet seat	1
10-20847	8	Screw, throttle stop lever	1
1399-97	9	Lever, throttle stop	1
1399-933	10	Shaft, throttle	1
24-20869	11	Spring, throttle shaft return	1
27-20848	12	Gasket, main adjustment screw gland	1
1399-94	13	Gland, main adjustment screw	1
1399-108	14	Packing, main adjustment screw	1
11-20849	15	Nut, main adjustment screw	1
1399-618	16	Screw, main adjustment	1
24-27160	17	Spring, idle adjustment screw	1
1399-1450	18	Screw, idle adjustment	1
1399-99	19	Gasket, float bowl cover	1
1399-1133	20	Cover, float bowl	1
1399-1136	21	Element, filter	1
10-20854	22	Screw, float bowl cover (short)	1
10-25850	23	Screw, float bowl cover (long)	1
27-25851	24	Gasket, strainer cover (large)	1
27-25849	25	Gasket, strainer cover (small)	1
1399-1135	26	Cover, strainer	1
27-25848	27	Gasket, strainer cover screw	1
10-25822	28	Screw, strainer cover fastening	1
10-23035	29	Screw and Lockwasher, throttle shutter	1
1399-1270	30	Shutter, throttle	1
1399-960	31	Tube, by-pass	1
10-23030	32	Screw, plug - by-pass tube	1
19-20011	33	Welch Plug, body channel	1
10-20870	34	Screw, plug - body channel	1
1399-95	--	Lead Shot (channel plug)	1
1399-1145	--	Gasket and Packing Set	1
1399-1487	--	Repair Parts Kit	1
27-22023	35	Gasket, carburetor flange	1
11-20184	36	Nut, carburetor mounting stud	2

CARBURETOR LINKAGE

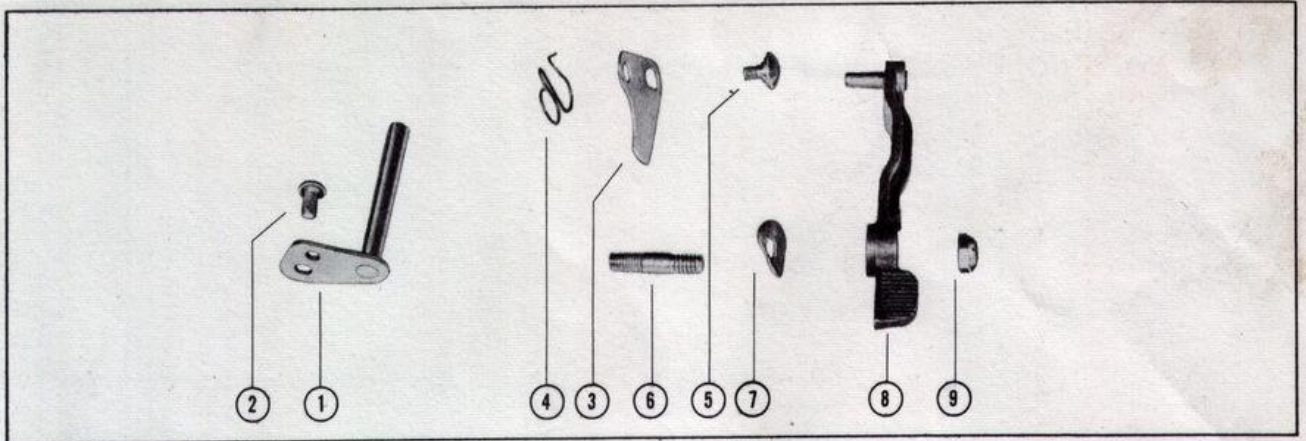
PART NO.	REF. NO.	DESCRIPTION	MK10
22931A2	1	Throttle Lever Assembly	1
10-20597	2	Screw, throttle lever to carburetor	1
20173	3	Shutter, choke	1
24-20579	4	Spring, choke shutter	1
10-20578	5	Screw, choke shutter to carburetor	1
16-27037	6	Stud, choke lever	1
13-20511	7	Washer, wave - choke lever stud	1
12-20533	-	Washer, choke lever stud	1
27036	8	Lever, choke	1
11-20586	9	Nut, choke lever fastening	1
37-27535	-	Decal, choke - drive shaft housing	1

FUEL PUMP AND FUEL LINE ASSEMBLY

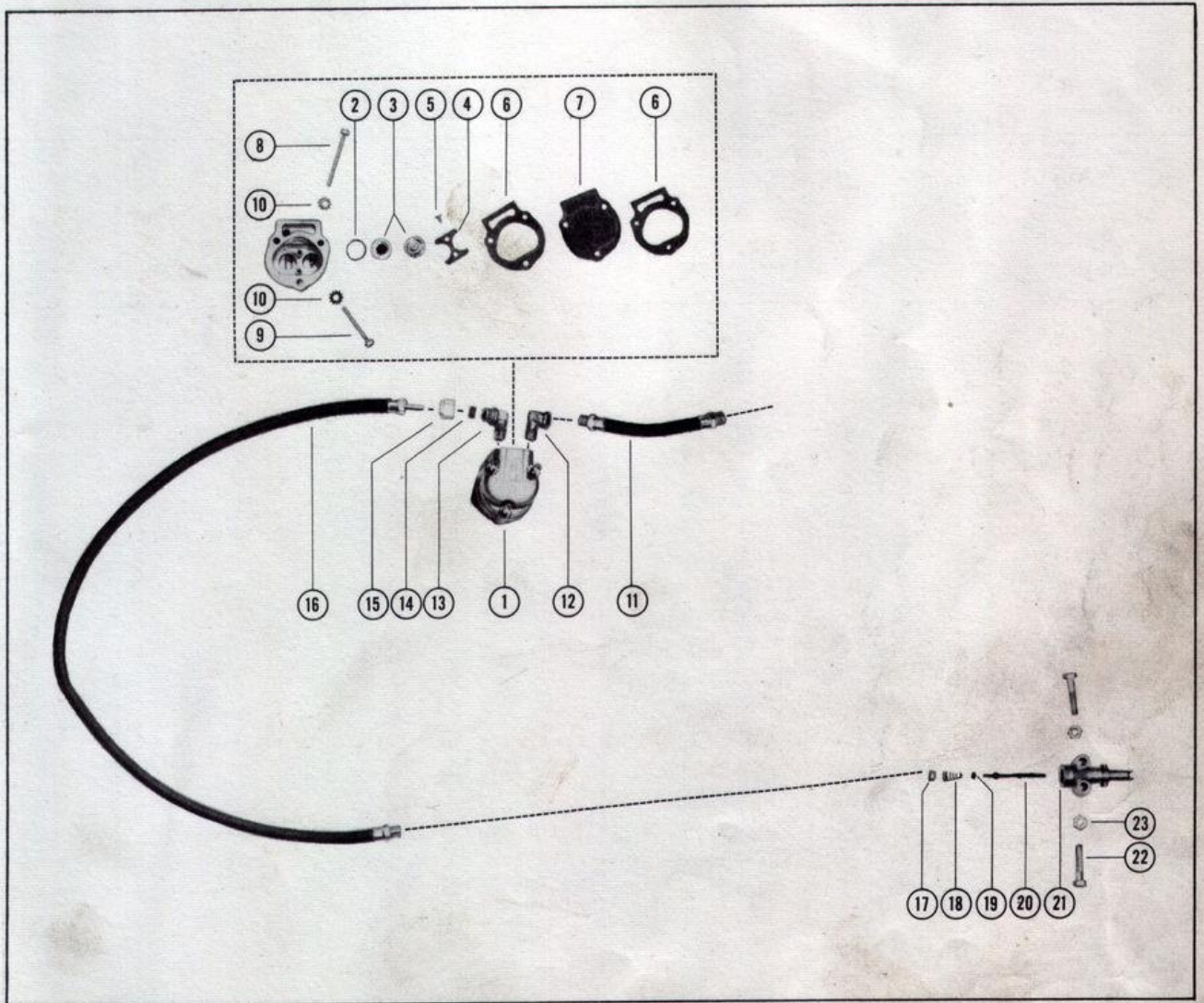
PART NO.	REF. NO.	DESCRIPTION	MK10
23009A1	1	Fuel Pump Assembly	1
27-23005	2	Gasket, check valve to housing	2
21-20963	3	Valve, check	2
23004	4	Retainer, check valve	1
10-20037	5	Screw, retainer to housing	2
27-24863	6	Gasket, fuel pump	2
23014	7	Diaphragm, fuel pump	1
10-26181	8	Screw, fuel pump mounting (1 5/8)	2
10-23702	9	Screw, fuel pump mounting (1 1/8)	1
13-20554	10	Lockwasher, fuel pump mounting screw	3
32-28599	11	Fuel Line, fuel pump to carburetor	1
22-25443	12	Fitting, fuel pump outlet	1
22-22995	13	Fitting, fuel pump inlet	1
22-22946	14	Sleeve, rubber	1
11-22948	15	Nut, fitting	1
32-26919	16	Fuel Line, fuel pump to adaptor	1
23068	17	Cup Washer, adaptor	1
24-23067	18	Spring, adaptor stem	1
25-20415	19	"O" Ring, adaptor stem	1
23069	20	Stem, check unit adaptor	1
22833	21	Adaptor, check unit	1
10-22421	22	Screw, check unit adaptor to bracket	2
12-20028	--	Washer, check unit adaptor screw	2
11-20184	23	Nut, check unit adaptor screw	2



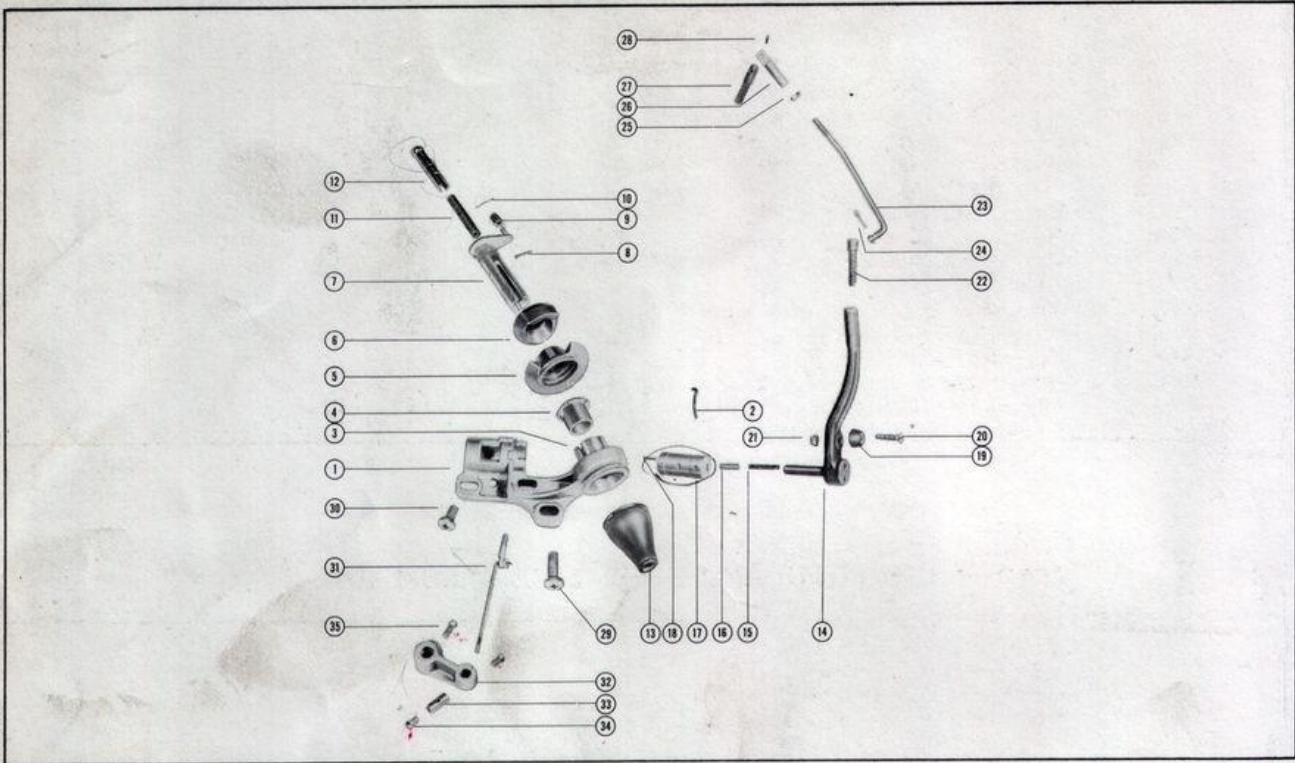
### CARBURETOR LINKAGE



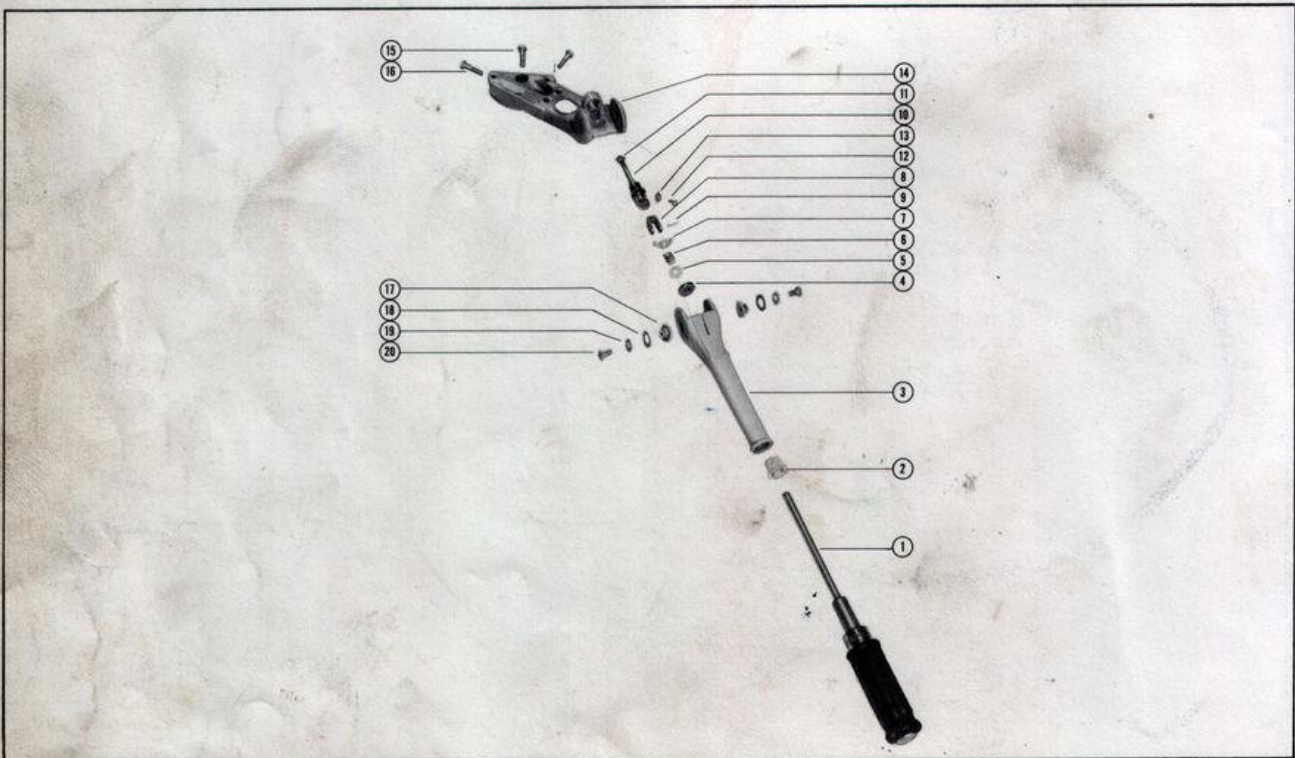
### FUEL PUMP AND FUEL LINE ASSEMBLY



## THROTTLE CONTROL ASSEMBLY



## STEERING HANDLE ASSEMBLY



THROTTLE CONTROL ASSEMBLY

PART NO.	REF. NO.	DESCRIPTION	MK10
27051	1	Bracket, throttle control	1
27060	2	Wire, detent - throttle control bracket	1
27044	3	Swivel, throttle control bracket	1
23-27056	4	Bushing, nylon - control bracket swivel	1
26732	5	Cam, male - shift arm	1
26733	6	Cam, female - shift arm	1
26734A1	7	Shift Arm Assembly	1
17-27088	8	Roll Pin, shift arm sleeve	1
26737	9	Spool, shift arm pin	1
26738	10	Wire, locking - spool to pin	1
24-26866	11	Spring, ball and sleeve	1
26754A1	12	Ball and Sleeve Assembly	1
26750	13	Boot, rubber - control bracket and shaft	1
26765	14	Arm, follower	1
24-27049	15	Spring, follower arm plunger	1
27048	16	Plunger, follower arm	1
27059	17	Sleeve, eccentric - follower arm	1
17-27055	18	Roll Pin, eccentric sleeve	1
26766	19	Follower	1
10-27054	20	Screw, follower to follower arm	1
11-26768	21	Nut, follower screw	1
26769	22	Swivel, bolt	1
26770	23	Link, drag - swivel	1
18-27769	24	Cotter Pin, drag link to swivel	1
11-20645	25	Nut, drag link adjusting	1
26771	26	Connector, drag link adjustment	1
26772	27	Rod, connector to stator plate	1
17-22512	28	Roll Pin, rod to adjustment connector	1
10-21356	29	Screw, control bracket to drive shaft housing (7/8)	2
10-21417	30	Screw, control bracket to drive shaft housing (1/2)	1
10-27045A1	31	Swivel Bolt and Drag Link Assembly	1
26796	32	Arm, troll lever	1
17-26746	33	Pin, anchor - troll lever arm	1
10-25277	34	Screw, set - drag link to troll lever arm	2
10-26797	35	Screw, set - troll lever arm to troll lever	2

STEERING HANDLE ASSEMBLY

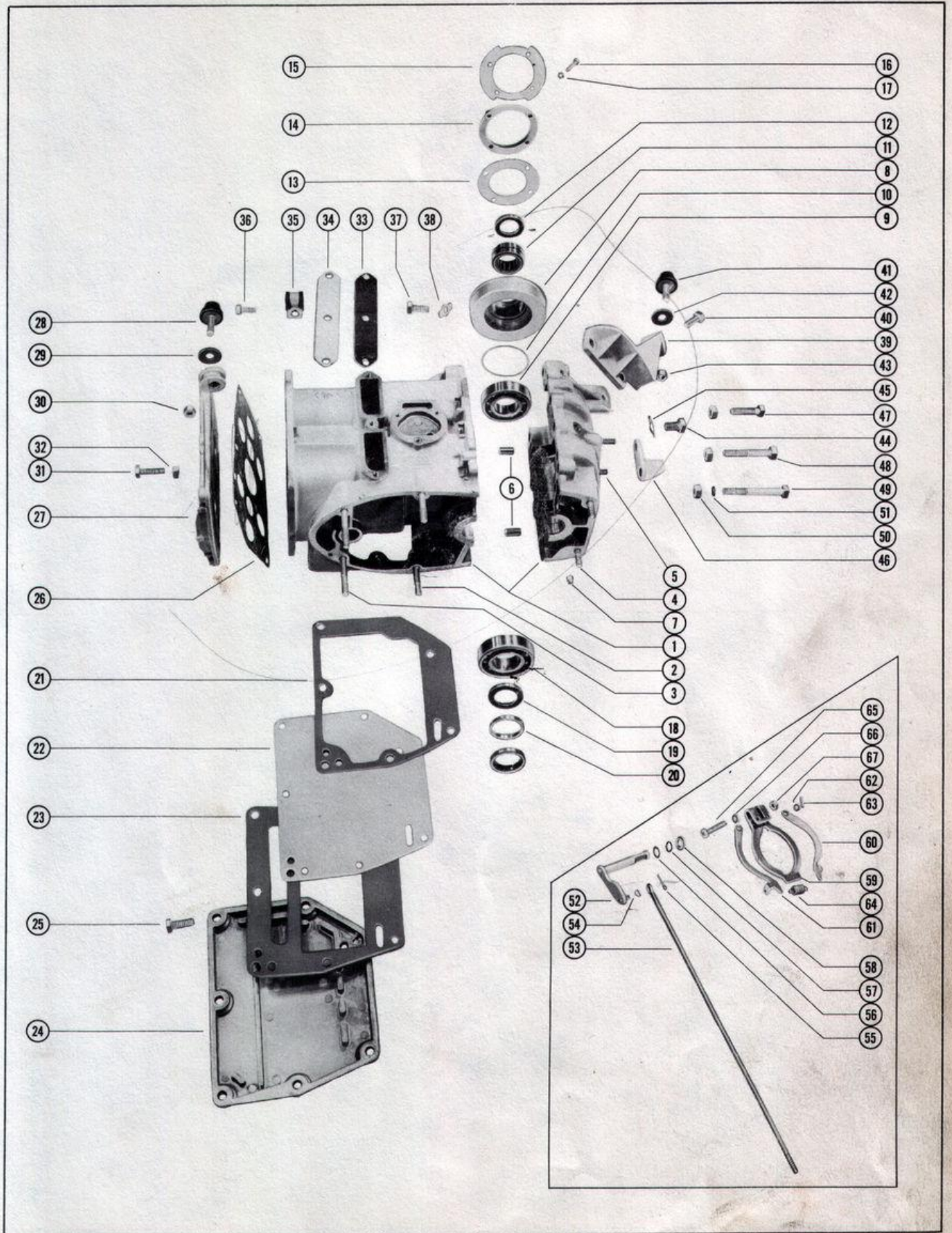
PART NO.	REF. NO.	DESCRIPTION	MK10
26715A4	-	Steering Handle Assembly, Complete	1
26715A3	1	Steering Handle Assembly (grip and shaft)	1
23-27132	2	Bushing, nylon - steering handle to tube	1
26710A1	3	Steering Handle Tube Assembly	1
23-26704	4	Bushing, steering handle tube	1
12-26702	5	Washer, nylon - steering handle shaft	1
24-26703	6	Spring, steering handle shaft	1
14-26706	7	Tab Washer, yoke pin holding	1
26713	8	Yoke, steering handle	1
17-26862	9	Pin, yoke to steering handle shaft	1
26942A1	10	Control Shaft Assembly	1
17-26862	11	Roll Pin, control shaft	1
10-26646	12	Screw, control shaft to steering bracket	1
12-21273	13	Washer, control shaft screw	1
26709	14	Bracket, steering arm	1
10-21259	15	Screw, bracket to saddle (1 1/2)	1
10-24878	16	Screw, bracket to saddle (1 1/4)	2
26711	17	Pivot, steering handle to bracket	2
15-26707	18	Shim, handle pivot to bracket	2
13-25244	19	Lockwasher, pivot fastening screw	2
10-26774	20	Screw, handle pivot fastening	2

CYLINDER BLOCK AND CRANKCASE ASSEMBLY

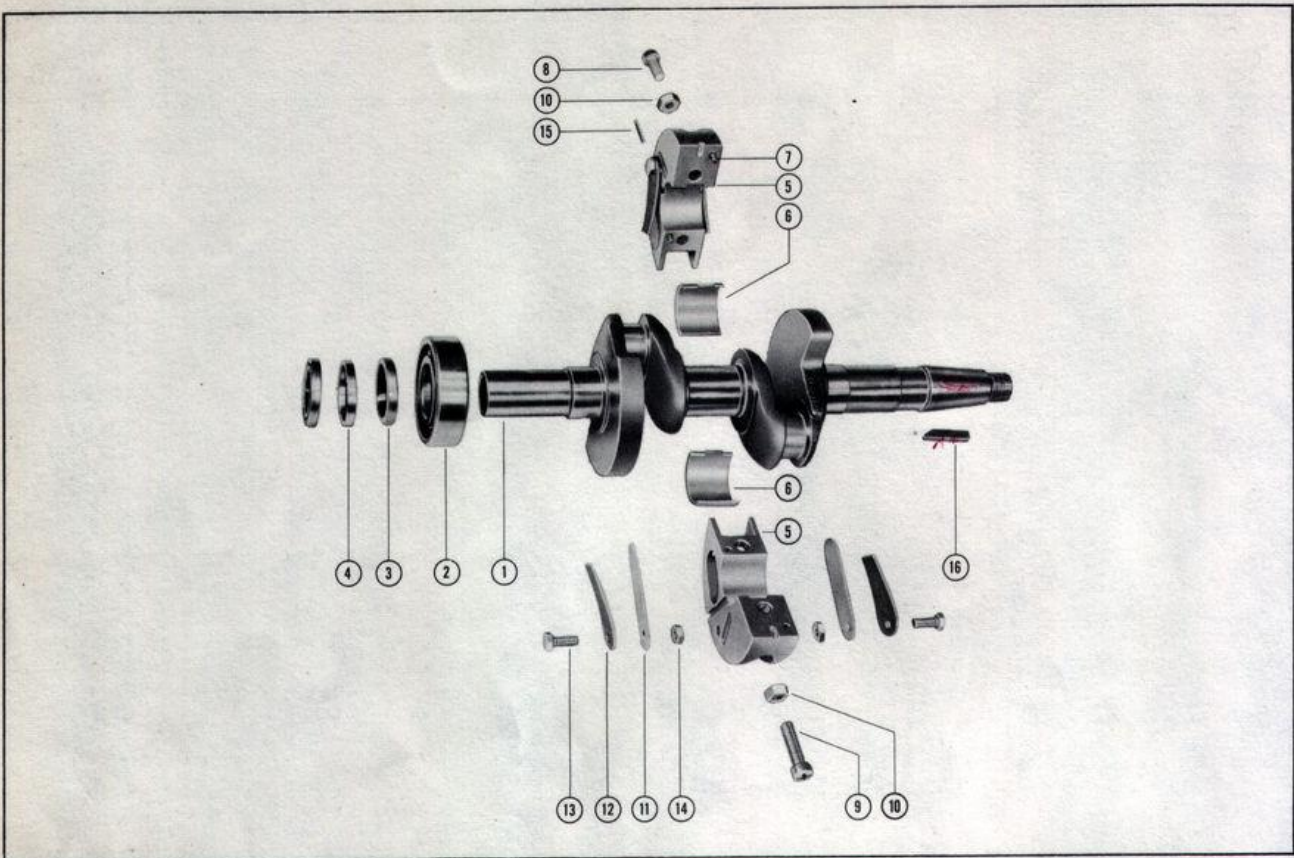
PART NO.	REF. NO.	DESCRIPTION	MK10
824-1205A3	1	Cylinder Block and Crankcase Assembly	1
16-20990	2	Stud, cylinder block to drive shaft housing	2
16-25734	3	Stud, cylinder block to drive shaft housing	2
16-20956	4	Stud, crankcase to drive shaft housing	2
16-20074	5	Stud, carburetor mounting	2
17-23784	6	Dowel Pin, crankcase to cylinder block	2
21-27146A1	7	Check Valve Assembly, crankcase	1
1123-1196A2	8	Crankcase Top Assembly	1
30-20464	9	Bearing, ball	1
15-20514	10	Shim, bearing to crankcase top (.002-3-5-10)	AR
31-20594	11	Bearing, roller	1
26-20530	12	Oil Seal	1
15-26931	13	Shim, spacer to crankcase top (.015)	1
23-26563	14	Spacer, hold down ring to crankcase top	1
26564	15	Ring, magneto hold down	1
10-25876	16	Screw, hold down ring to crankcase top	4
13-26996	17	Lockwasher, hold down ring screw	4
30-20464	18	Bearing, ball - crankcase (lower)	1
26-20465	19	Oil Seal, crankcase (lower)	2
23-27143	20	Spacer, lower oil seal	1
27-26172	21	Gasket, cylinder block to baffle plate	1
26170	22	Plate, baffle - exhaust manifold	1
27-26171	23	Gasket, baffle plate to manifold cover	1
26121	24	Cover, exhaust manifold	1
10-20474	25	Screw, manifold cover to cylinder block	7
27-26173	26	Gasket, cylinder block cover	1
1009-1200	27	Cylinder Block Cover Assembly	1
28805	28	Mount, rubber - top cowl	2
12-27129	29	Washer, rubber mount stud	2
11-20083	30	Nut, rubber mount to cover	2
10-20653	31	Screw, cover to cylinder block	6
11-20184	32	Nut, cylinder block cover screw	6
27-26175	33	Gasket, transfer port cover	1
26174	34	Cover, transfer port	1
54-20534	35	Clamp, harness - ignition wires	1
10-20540	36	Screw, port cover to cylinder block	3
12-20028	--	Washer, port cover fastening screw	1
10-25299	37	Screw, crankcase top fastening	2
14-20747	38	Tab Washer, top fastening screw	2
26799	39	Bracket, top cowl mounting	1
10-28782	40	Screw, cowl mounting bracket to crankcase	2
28805	41	Mount, rubber - top cowl	1
12-27129	42	Washer, rubber mount stud	1
11-20083	43	Nut, rubber mount to bracket	1
10-27165	44	Screw, center main bearing locking	1
14-20091	45	Tab Washer, locking screw	1
27092	46	Stop, centering arms	1
10-26066	47	Screw, crankcase to cylinder block (1 1/4)	6
10-21449	48	Screw, crankcase to cylinder block (2)	2
10-26132	49	Screw, crankcase to cylinder block (2 1/2)	2
11-29250	50	Nut, crankcase screw	10
25-25429	51	"O" Ring, crankcase fastening screw	1
27075	52	Shift Cam Lever Assembly	1
27072	53	Shaft, upper shift	1
13-27071	54	Washer, wave - shift cam lever pin	1
18-26953	55	Cotter Pin, upper shift shaft to cam lever	1
13-27085	56	Washer, wave - cam lever to crankcase	1
25-21706	57	"O" Ring, shift cam lever	1
23-27073	58	Spacer, shift cam lever to crankcase	1
12-20084	--	Washer, shift cam lever	1
27058	59	Cam, shifting	1
27089	60	Arm, centering (starboard)	1
27090	61	Arm, centering (port)	1
12-27124	62	Washer, centering arm roll pin	2
17-22863	63	Roll Pin, centering arm to shifting cam	2
24-27108	64	Spring, centering arm tension	1
10-23015	65	Screw, cam lever to shifting cam	1
12-26014	66	Washer, cam lever screw	1
11-20645	67	Nut, cam lever screw	1

NOTE: On later engines the counterbore at shift cam lever hole on crankcase has been removed. Therefore, with this change, one 12-20084 washer is used in place of the 25-21706 "O" ring and 23-27073 spacer. "O" ring and spacer must still be used on all crankcases where shift cam lever hole has counterbore.

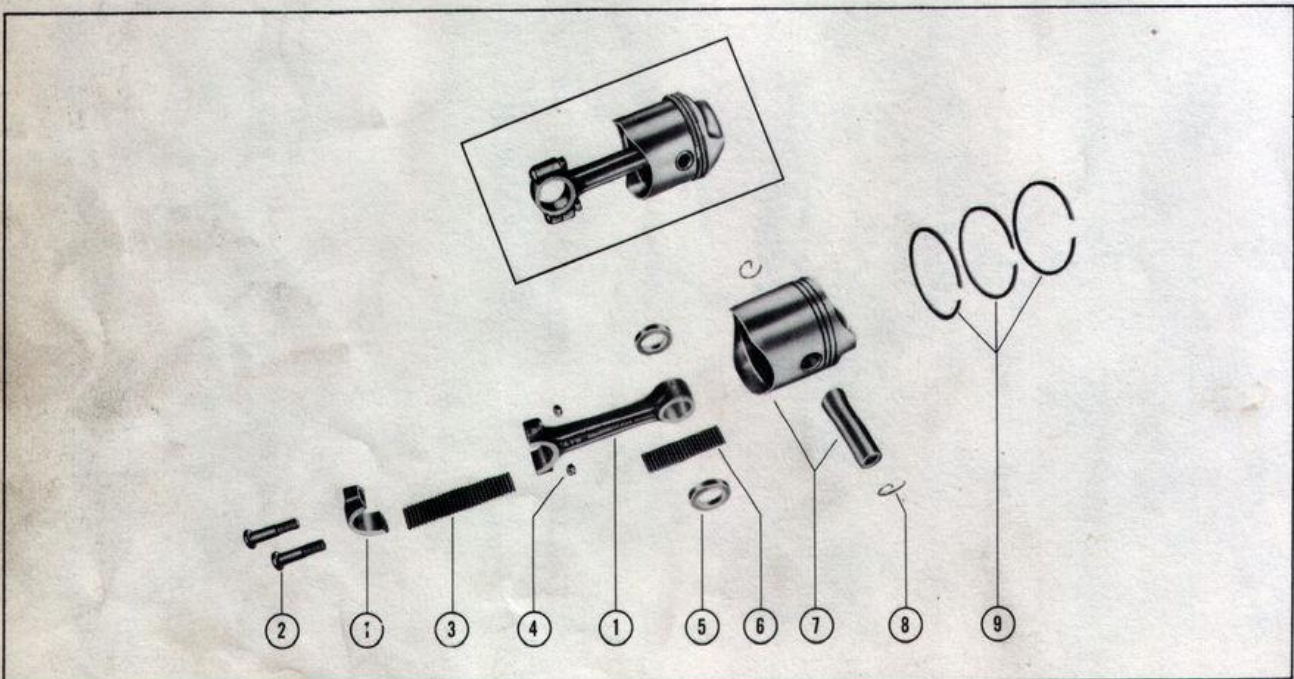
# CYLINDER BLOCK AND CRANKCASE ASSEMBLY



# CRANKSHAFT AND CENTER MAIN BEARING ASSEMBLY



# PISTON AND CONNECTING ROD ASSEMBLY



CRANKSHAFT AND CENTER MAIN BEARING ASSEMBLY

PART NO.	REF. NO.	DESCRIPTION	MK10
415-1180	1	Crankshaft	1
30-20464	2	Bearing, ball - crankcase (lower)	1
26-20465	3	Oil Seal, crankcase (lower)	2
23-27143	4	Spacer, lower oil seal	1
522-1197A2	5	Center Main Bearing Assembly	1
25103	6	Insert, center main bearing (pair)	1
17-20032	7	Dowel Pin, center main bearing	2
10-26184	8	Screw, center main bearing clamping (9/16)	1
10-22486	9	Screw, center main bearing clamping (7/8)	1
11-20184	10	Nut, bearing clamping screw	2
34-21293	11	Reed, center main bearing	4
34-25454	12	Reed Stop, main bearing reed valves	4
10-20100	13	Screw, reed stop mounting	4
11-24656	14	Nut, reed stop mounting screw	4
17-20032	15	Dowel Pin, main bearing to cylinder block	1
28-20907	16	Key, flywheel	1

PISTON AND CONNECTING ROD ASSEMBLY

PART NO.	REF. NO.	DESCRIPTION	MK10
600-7A3	1	Connecting Rod Assembly	2
10-20060	2	Screw, connecting rod	4
29-20046	3	Bearing, needle - crankpin	50
11-20061	4	Nut, connecting rod screw	4
12-26178	5	Washer, needle bearing retaining	4
29-20063	6	Bearing, needle - piston pin	44
713-1206A4	7	Piston and Piston Pin Assembly	2
40-20057	8	Lock Ring, piston pin	4
39-23124	9	Ring, piston	6

Oversize Pistons and Rings

713-1386A1	-	Piston and Piston Pin Assembly (.015 oversize)	2
39-27734	-	Ring, piston (.015 oversize)	6

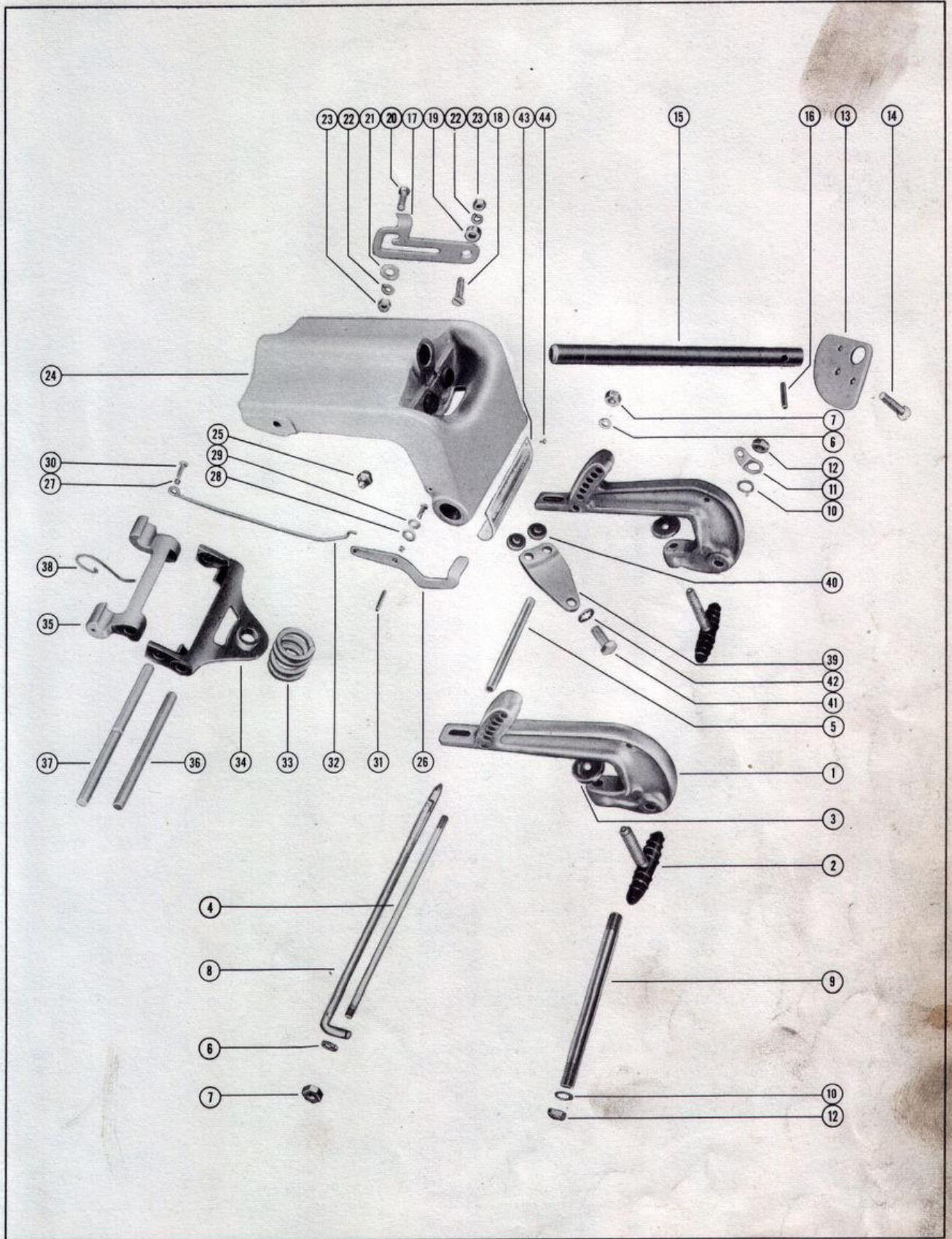
## CLAMP AND SWIVEL BRACKET ASSEMBLY

PART NO.	REF. NO.	DESCRIPTION	MK10
1408-1317A1	1	Clamp Bracket Assembly	2
22477	2	Thumb Screw Assembly	2
12-20214	3	Washer, thumb screw	2
16-20657	4	Stud, clamp bracket	1
23-20658	5	Spacer, clamp bracket stud	1
13-26993	6	Lockwasher, clamp bracket stud	2
11-20083	7	Nut, clamp bracket stud	2
17-28848A2	8	Tilt Lock Pin Assembly	1
16-25674	9	Stud, clamp bracket to swivel bracket	1
15-25600	10	Shim, clamp bracket stud	2
54-25735	11	Clip, safety chain - bracket stud	1
11-25599	12	Nut, clamp bracket stud fastening	2
26558	13	Co-Pilot Disc	1
10-27303	14	Screw, co-pilot disc to saddle	3
17-26540	15	Swivel Pin	1
17-26541	16	Roll Pin, swivel pin to saddle	1
26864	17	Lever, tilt stop	1
10-20217	18	Screw, anchor - tilt stop lever	1
23-20216	19	Spacer, tilt stop lever screw	1
10-27790	20	Screw, retaining - lever to swivel bracket	1
15-20473	--	Shim, retaining screw	1
13-27085	21	Washer, wave - retaining screw	1
13-26992	22	Lockwasher, tilt stop lever screw	2
11-20088	23	Nut, tilt stop lever screw	2
1438-1225	24	Swivel Bracket	1
22-23612	25	Fitting, grease (swivel pin)	1
27158	26	Lever, control - reverse tilt lock	1
23-27066	27	Spacer, drive screw to link	1
23-27735	--	Spacer, control lever	1
12-27157	28	Washer, drive screw (upper)	1
13-20889	29	Washer, wave - drive screw (upper)	1
10-27067	30	Screw, drive - lever and link fastening	2
17-27156	31	Roll Pin, swivel bracket upper drive screw	1
27159	32	Link, control lever to ratchet hook	1
24-26530	33	Spring, tilt lock bracket	1
24-20229	--	Spring, tilt lock bracket spring	1
26531	34	Bracket, reverse tilt lock	1
26532	35	Ratchet Hook, reverse tilt lock	1
17-26536	36	Pin, ratchet hook to tilt lock bracket	1
18-23858	--	*Cotter Pin, ratchet hook spring	2
17-26535	37	Pin, tilt lock bracket to swivel bracket	1
24-26534	38	Spring, ratchet hook tension	1
26395	39	Plate, clamp - co-pilot	1
20203	40	Disc friction - clamp plate and swivel bracket	4
10-27200	41	Screw, clamp plate to swivel bracket	1
13-21804	42	Lockwasher, clamp plate screw	1
38-26582	43	Serial Plate	1
10-20314	44	Screw, drive - serial plate to swivel bracket	4

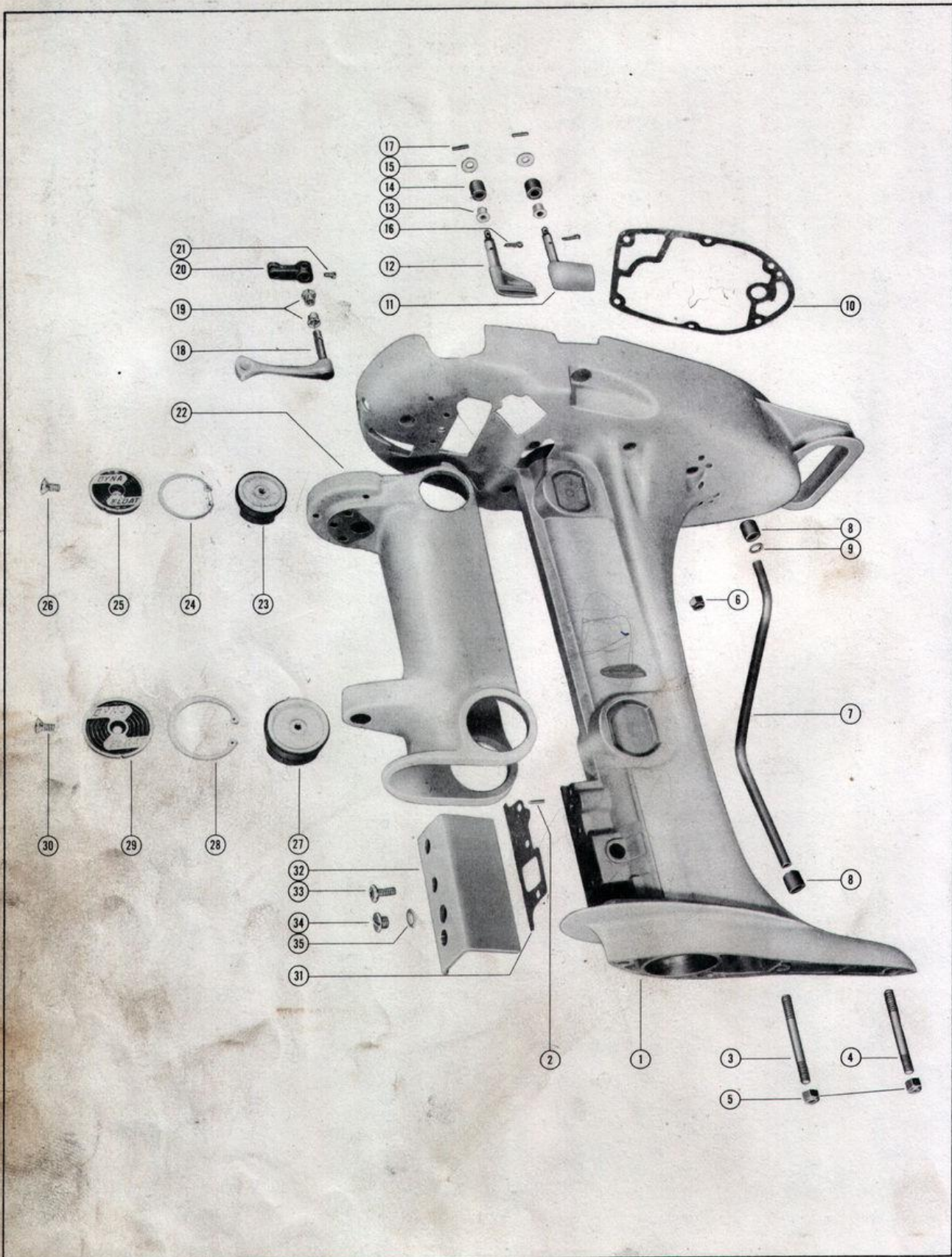
\* Started with Serial #1069061.



# CLAMP AND SWIVEL BRACKET ASSEMBLY



# DRIVE SHAFT HOUSING ASSEMBLY



DRIVE SHAFT HOUSING ASSEMBLY

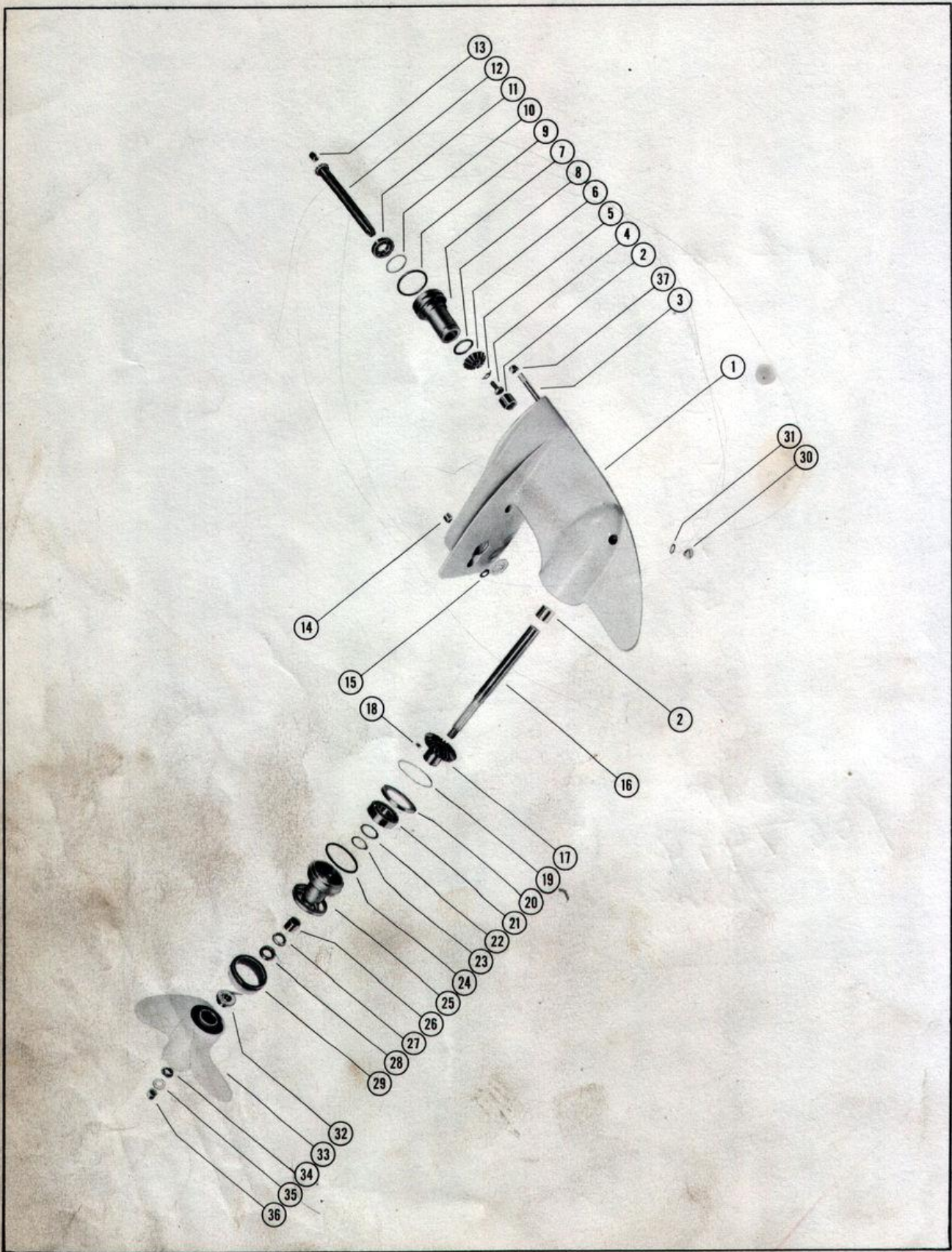
PART NO.	REF. NO.	DESCRIPTION	MK10
1531-1231A2	1	Drive Shaft Housing Assembly	1
17-25905	2	Roll Pin, water pump cartridge	1
16-26324	3	Stud, drive shaft housing to gear housing	1
16-26776	4	Stud, drive shaft housing to gear housing	1
11-21528	5	Nut, drive shaft housing to gear housing stud	3
11-20184	6	Nut, powerhead to drive shaft housing	6
32-26559	7	Tube, water inlet	1
26-26865	8	Seal, rubber - water inlet tube	2
12-20413	9	Washer, water inlet tube locating	1
27-26806	10	Gasket, powerhead to drive shaft housing	1
26822	11	Lever, top cowl clamping (port)	1
26823	12	Lever, top cowl clamping (starboard)	1
23-26819	13	Bushing, nylon - clamping lever to housing	2
23-25915	14	Bushing, rubber - clamping lever	2
12-26825	15	Washer, clamping lever shaft	2
18-20180	16	Cotter Pin, clamping lever holding	2
17-25319	17	Roll Pin, clamping lever	2
26836	18	Lever, troll control	1
23-26841	19	Bushing, nylon - troll control lever	2
26796	20	Arm, troll lever	1
10-26797	21	Screw, set - arm to troll control lever	2
1530-1230	22	Saddle	1
25678	23	Mount, rubber (upper)	2
53-23720	24	Ring, retaining - upper mount	2
25155	25	Cover, upper mount	2
10-28637	26	Screw, upper mount cover fastening (10-25156)	2
25682	27	Mount, rubber (lower)	2
53-23721	28	Ring, retaining - lower mount	2
25154	29	Cover, lower mount	2
10-28637	30	Screw, lower mount cover retaining	2
27-26818	31	Gasket, transmission cover	1
26824	32	Cover, transmission	1
10-26833	33	Screw, transmission cover to drive shaft housing	2
10-28638	--	Screw, transmission cover flushing hole	1
10-28634	34	Screw, gear housing vent	1
12-20260	35	Washer, gear housing vent screw	1

WATER PUMP CARTRIDGE, DRIVE SHAFT AND TRUNNION CARRIER ASSEMBLY

PART NO.	REF. NO.	DESCRIPTION	MK10
25-26802	1	"O" Ring, upper drive shaft	1
12-20684	2	Slinger, centrifugal	1
26719	3	Plate, top - water pump	1
47-26554	4	Impeller, water pump	1
46-26775A2	5	Water Pump Cartridge Assembly	1
20811	6	Sleeve, water pump cartridge	1
26729	7	Plate, bottom	1
26-26782	8	Oil Seal, water pump cartridge	1
25-20812	9	Ring, rubber - sealing	1
12-20808	10	"L" Washer, water pump cartridge	1
26783	11	Sleeve, drive shaft ball bearing	1
30-21776	12	Bearing, ball - upper drive shaft	1
15-26728	13	Shim, ball bearing to drive shaft (.002-3-10-20-30-40)	AR
53-27996	14	Ring, lock - water pump cartridge	1
45-26718A1	15	Drive Shaft Assembly (upper)	1
23-26660	16	Bushing, drive shaft	1
28-28784	17	Key, drive shaft	1
12-26837	18	Washer, clutch retaining	1
24-27020	19	Spring, neutral	1
12-26835	20	Washer, thrust - neutral spring	1
43-27004A1	21	Input Drum & Gear Assembly	1
23-26660	22	Bushing, input drum and gear	2
27995	23	Sleeve, reverse control - trunnion carrier	1
24-27021	24	Spring, forward and reverse - trunnion carrier	1
27009A2	--	Trunnion Carrier Assembly, Complete	1
27009A1	25	Trunnion Carrier Assembly	1
43-26688	26	Gear, idler	2
12-26662	27	Washer, thrust - idler gear	2
26665	28	Shaft, idler gear to carrier	2
26691	29	Shaft, pilot - trunnion carrier	1
28-27019	30	Key, spring catch	1
29-26689	31	Pin, roller - key and shaft holding	1
12-26661	32	Washer, thrust - pilot shaft (lower - .020)	2
12-29446	32	Washer, thrust - pilot shaft (upper - .031)	2
27017	33	Sleeve, trunnion carrier	1
27072	34	Shaft, upper shift	1
11-20645	35	Nut, adjusting - sleeve locking	1
26874	36	Sleeve, upper to lower shift shaft	1
29289A1	37	Rod, lower control shift	1
27010	38	Shaft, control - transmission	1
25-26834	39	"O" Ring, transmission control shaft	1
13-27071	40	Washer, wave - lower shift rod	1
18-27769	41	Cotter Pin, lower shift rod to control shaft	1
27767	42	Pawl, neutral	1
27766	43	Pawl, reverse	1
27016	44	Shaft, neutral and reverse pawl	1
24-27014	45	Spring, neutral pawl	1
24-27013	46	Spring, reverse pawl	1
17-26926	47	Pin, pawl spring retaining	1
23-26927	48	Spacer, control pawl spring	1



# GEAR HOUSING ASSEMBLY



GEAR HOUSING ASSEMBLY

PART NO.	REF. NO.	DESCRIPTION	MK10
1614-1209A2	-	Gear Housing Assembly, Complete (less prop)	1
1614-1209A1	1	Gear Housing Assembly ( <i>superseded by 1614-1440A1</i> )	1
31-20790	2	Bearing, roller - prop and drive shaft (7/8" O.D.)	2
16-26809	3	Stud, gear housing to drive shaft housing	1
10-20807	4	Screw, pinion gear to drive shaft	1
14-20806	5	Tab Washer, pinion gear screw	1
43-26312	6	Gear, pinion	1
26315A1	7	Pilot Assembly, gear housing	1
25-26317	8	"O" Ring, pilot assembly (lower)	1
25-27018	9	"O" Ring, pilot assembly (upper)	1
15-21886	10	Shim, ball bearing to pilot (.002-3-5-10)	AR
30-21776	11	Bearing, ball - pilot and drive shaft	1
45-26694A1	12	Drive Shaft Assembly (lower)	1
23-26660	13	Bushing, drive shaft	1
17-20201	14	Dowel, hollow - drive shaft housing stud	1
35-26314	15	Screen, water inlet - gear housing	1
44-26308	16	Shaft, propeller	1
43-26311	17	Gear, propeller	1
17-21156	18	Pin, propeller gear to shaft	1
15-26320	19	Shim, "L" Washer to gear housing (.002-3-5-10)	AR
12-26309	20	"L" Washer, ball bearing	1
30-20464	21	Bearing, ball - propeller gear	1
15-21158	22	Shim, ball bearing to snap ring (.003-5-10)	AR
53-21159	23	Ring, snap - ball bearing to propeller gear	1
25-20311	24	"O" Ring, bearing carrier assembly	1
26313A1	25	Bearing Carrier Assembly ( <i>superseded by 28460A1</i> )	1
31-20790	26	Bearing, roller - bearing carrier (7/8" O.D.)	1
26-27163	27	Oil Seal, bearing carrier ( <i>spring loaded</i> )	1
26-26805	28	Oil Seal, bearing carrier	1
26310	29	Cover, gear housing	1
10-28634	30	Screw, grease filler hole	1
12-20260	31	Washer, grease filler hole screw	1
23-27023	32	Collar, propeller shaft	1
48-26608A1	33	Propeller Assembly (9 1/2 x 9 1/2)	1
23-27024	34	Spacer, propeller (splined)	1
12-27025	35	Washer, propeller nut	1
11-27687	36	Nut, propeller	1
11-21528	37	Nut, gear housing to drive shaft housing studs	3

Note: When replacing either gear housing cover (part #26310) or propeller (part #48-26608A1) on Mark 10 engines with serial #1059111 and below, both parts must be changed. Reason is addition of labyrinth to cover to help seal between cover and propeller. Propeller diameter was also bored deeper to correspond with labyrinth seal added to cover.

All Mark 10 engines, starting with serial #1061480 and up, have 2 oil seals in bearing carrier assembly. The new "spring-loaded" oil seal (part #26-27163) was added for better sealing qualities and to prevent loss of grease. Also when replacing original bearing carrier assembly (26313A1) by superseding part (28460A1) the roller bearing (31-28157) in this assembly is 15/16" O.D. This larger diameter roller bearing also is used in 1614-1440A1 Gear Housing Assembly.